



Sinclair  Hammelton

OFFERS IN EXCESS OF

**£280,000**

**Ringers Road**

Bromley, BR1 1AA



## PROPERTY SUMMARY

Situated in the heart of Bromley town centre, is this prominent modern 1 bedroom apartment close to Bromley South station.

This apartment is located on the eighth floor and in excellent condition. Internally, the flat is neutrally decorated with crisp white walls and neutral shade of carpets throughout. The lounge offers enough space for both lounge and dining areas. The kitchen is fully fitted with all essential appliances, light grey units and a contrasting dark grey work surface. The bedroom is also a generous size.

Leasehold - 125 years since 2016  
Service Charge - £178 per month  
Ground Rent - n/a  
COUNCIL TAX - C  
Construction - Standard  
Mains Services - Electricity, Sewerage and water  
Heating System - Communal heating

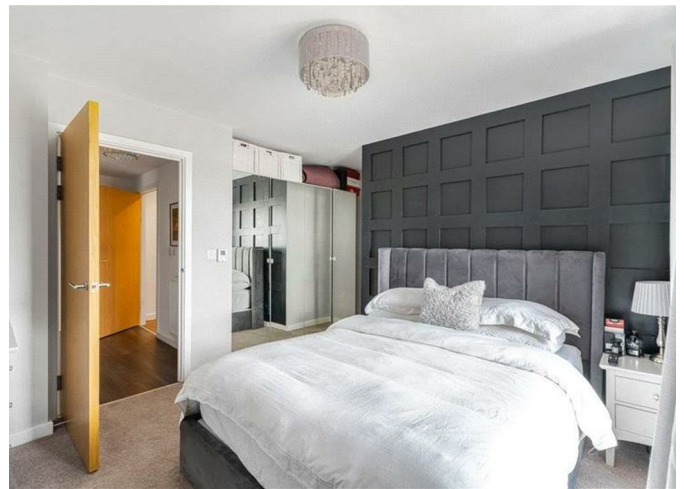
1



1



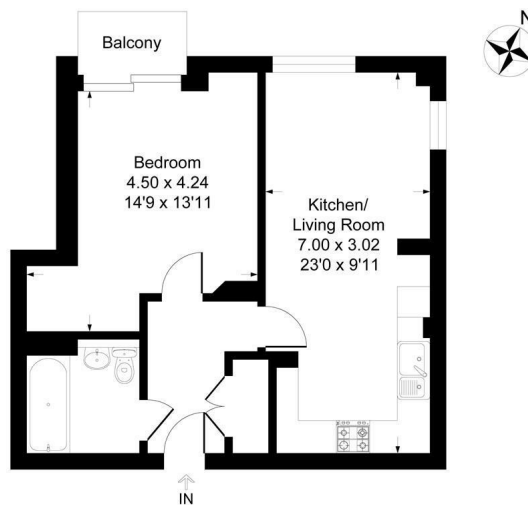
0





## Henry House, BR1

Approximate Gross Internal Area 47.7 sq m / 514 sq ft



This plan is for layout guidance only. Not drawn to scale unless stated. Windows and door openings are approximate. Whilst every care is taken in the preparation of this plan, please check all dimensions, shapes and compass bearings before making any decisions reliant upon them.  
Produced By Planpix

1  
1  
0

Energy Efficiency Rating		
	Current	Potential
Very energy efficient - lower running costs		
(92 plus) <b>A</b>		
(81-91) <b>B</b>	84	84
(69-80) <b>C</b>		
(55-68) <b>D</b>		
(39-54) <b>E</b>		
(21-38) <b>F</b>		
(1-20) <b>G</b>		
Not energy efficient - higher running costs		
England & Wales		EU Directive 2002/91/EC

**EPC RATING: B COUNCIL TAX BAND: C**

Agents Note: Whilst every care has been taken to prepare these particulars, they are for guidance purposes only. All measurements are approximate and are for general guidance purposes only and whilst every care has been taken to ensure their accuracy, they should not be relied upon and potential buyers/tenants are advised to recheck the measurements

Sinclair  Hammelton

### OFFICE ADDRESS

23 High Street  
Bromley  
Kent  
BR1 1LG

### OFFICE DETAILS

0208 464 5566  
info@sinclairhammelton.co.uk